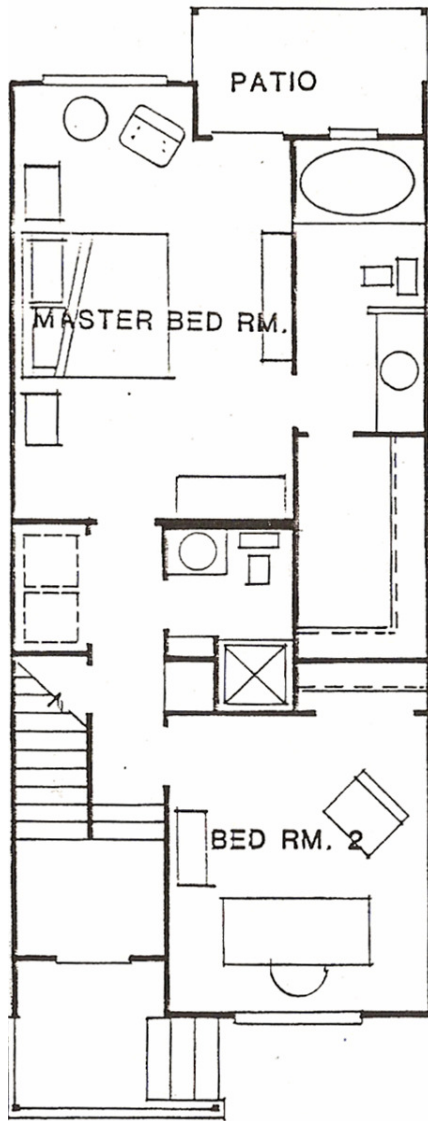
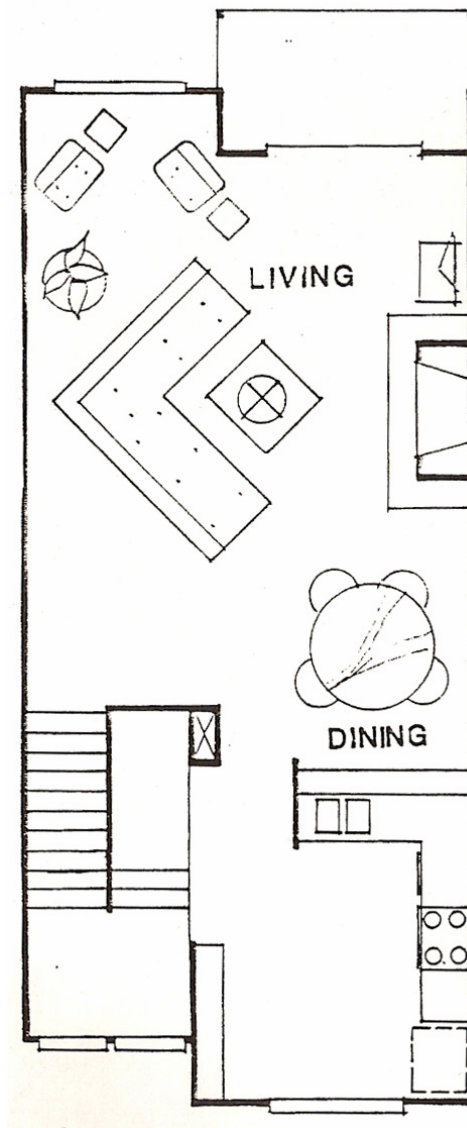


# Octavia

The Uptown-style “gingerbread” laced exterior opens through a “Victorian” glass door to a two-story foyer 20 feet below the peak of the beamed ceiling in the great room. A massive brick fireplace dominates the great room which includes the formal dining area. Even the kitchen has high ceilings as well as raised-panel oak cabinets, a microwave, bar, and an informal dining area. Downstairs are two bedrooms, two baths, and a laundry area. The luxurious master has an immense walk-in closet as well as a garden bath with a whirlpool tub under a window that views the private patio.



**First Floor**



**Second Floor**